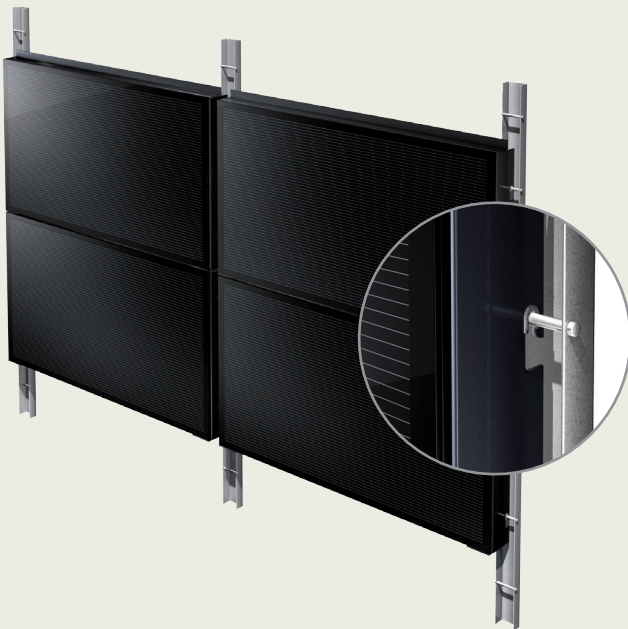


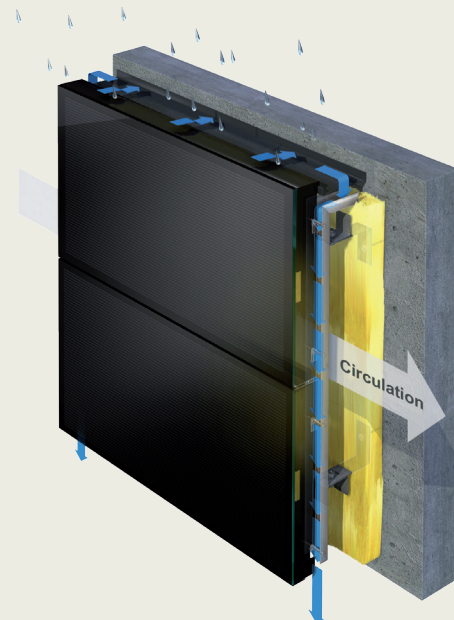
Sulfurcell's frameless cassette modules create high quality facades with excellent yields.

Sulfurcell's frameless cassette modules are based on the proven system used for facade cassette cladding and benefit from its simple method of installation. The innovative adhesive technology eliminates the need for intrusive clamping brackets or edge frames. Because the cassette modules from Sulfurcell create the

external building envelope, this enables them to discharge water in a controlled manner and protect the layers behind from moisture penetration. The rear ventilation behind the cassette modules prevents the build up of interstitial condensation and also cools the PV modules.



The solar cassettes are installed like conventional facade cassette systems.



The rear ventilation prevents interstitial condensation and cools the solar modules.

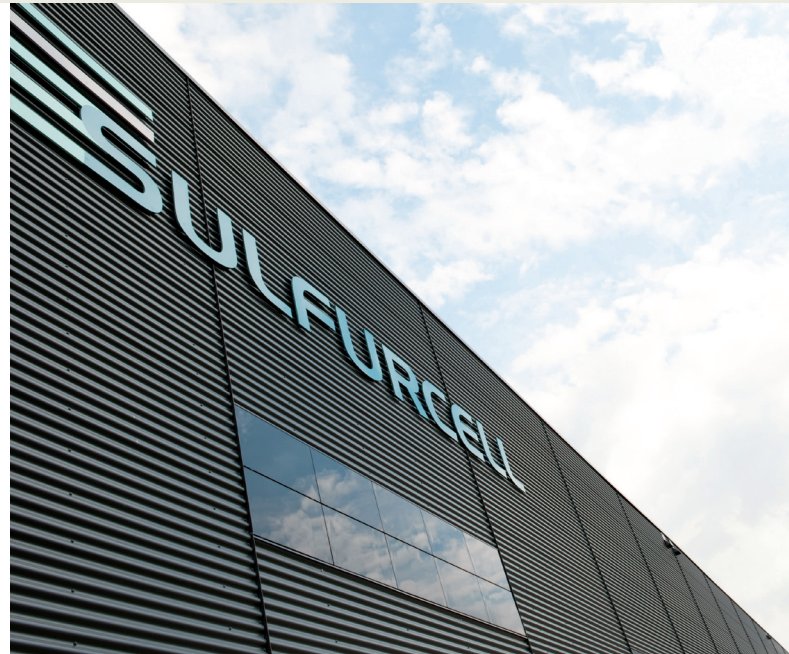


Application areas:

The highly attractive appearance of Sulfurcell cassette modules enables designers and architects to integrate high-yield PV modules into facades in a visually appealing manner – whether covering the entire walls of industrial buildings or cladding self-contained surfaces on office and administrative buildings.

The frameless cassette modules are integrated in the facades of:

- Industrial and commercial buildings
- Individual homes and apartment buildings
- Public buildings



With their smooth black appearance and “pinstripe look”, Sulfurcell’s frameless cassette modules combine innovative solar power technology with an attractive design.

We provide:

- Laminates (including in customized formats)
- Special adhesive
- Advice on obtaining necessary approvals
- Cassette specifications (stiffness, load-bearing capacity, surface properties, etc)
- Mediation with manufacturers of basic cassette cladding systems

What needs to be considered:

Standard solar cassettes are 1,250 mm x 650 mm x 85 mm in size but can also be ordered in other sizes on request. Whereas dummy cassettes can be provided in any size required, active modules are only possible with slight deviations in the dimensions.

Design services:

Support for developers: When designing facade elements, Sulfurcell recommends using specialist designers such as architects or facade planners. Sulfurcell can provide help in selecting suitable partners.

Construction permits:

As an integral part of facades, solar cassettes are subject to the applicable building regulations. This means that a structural engineer must structurally verify the overall structure.

In Germany, this kind of construction system requires individual approval. This was awarded for our new office building. Sulfurcell provides support in this regard through its contacts with expert appraisers and building authorities. The basic requirements for facade glazing are met through deploying laminated glass with EVA film in combination with structural glazing adhesives that have national technical approval.

In terms of establishing the usability of this construction system, Sulfurcell can also provide previously published appraisals and test reports.

Technical data:

Standard dimensions: 1,250 mm x 650 mm
Thickness: Approx. 85 mm (variable)
Weight: Approx. 20 kg
Other sizes are available on request

Load-bearing capacity:

Design load: min. 2.4 kN/m²*

*In Germany, special authorization is required for each individual case.